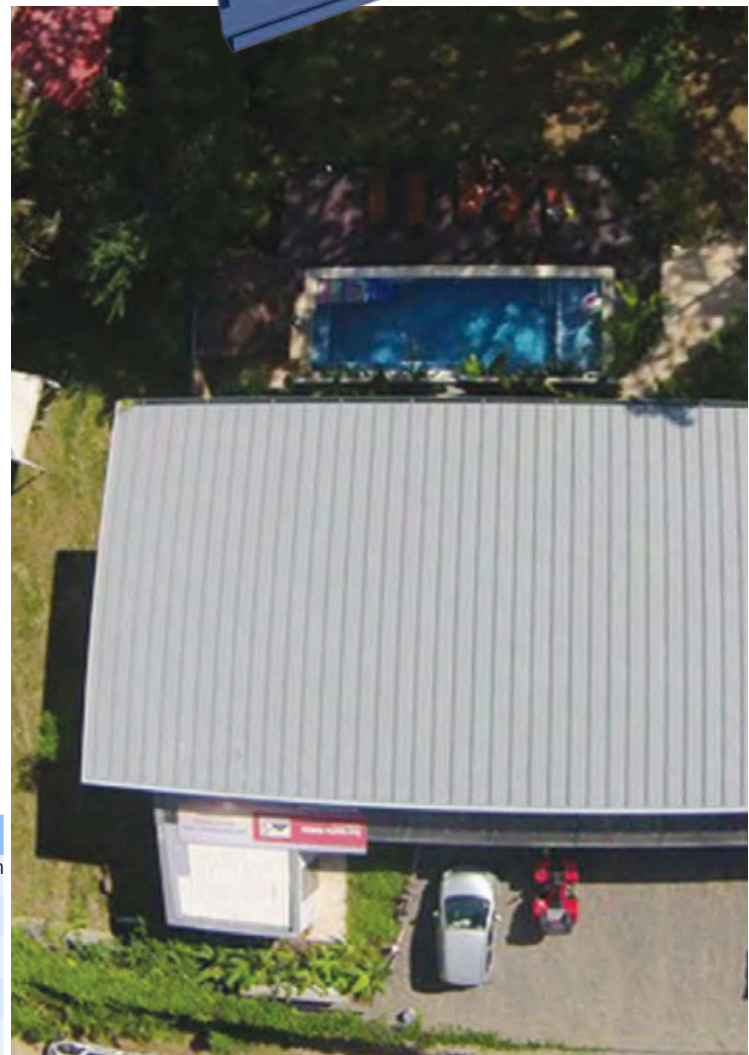
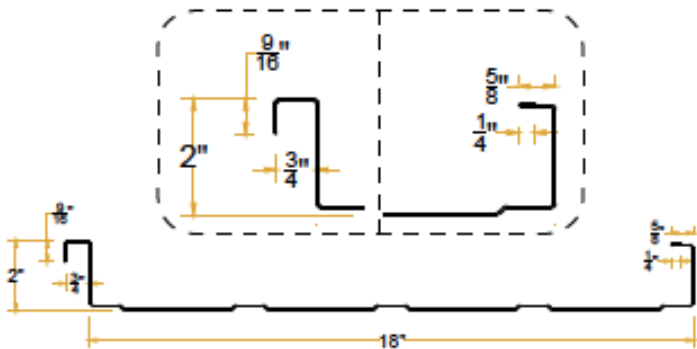




TOTAL LOCK 18-45 ROOF PANELS

TL 18-45 roof panels are affordable and have good adaptability.

- Recommended for structures with wide spacing between rafters and relatively frequent traffic.
- Can accommodate photovoltaic systems and other equipment.
- Ideal for roofs that do not require too much thermal and/or acoustic insulation.
- Good hydraulic capacity These roof panels are suitable for reflective insulation (see Insulation) wherever cooler spaces are desired.



SINGLE LAYER PANEL PROPERTIES

TL 18-45

Standing seam		50.8 mm
Width		445 mm-452 mm
Max. weight by m2 (26 gauge)		5.31kg-5.39kg
Max. weight by m2 (24 gauge)		5.75 kg-5.84 kg
Min. slope		6%
Max. spacing between rafters (27 gauge)		1 m
Max. spacing between rafters (26 gauge)		1.5 m
Max. spacing between rafters (24 gauge)		2 m